

### MAP LEGEND

Main Loop Route is Approximately 152 Miles Long

- Main Loop Route
- Scenic Roads
- Incoming Routes
- Water Trail
- Pacific Northwest Trail
- Gravel Roads
- Rail Trail
- Okanogan National Forest
- Colville National Forest
- Towns
- Lakes

Fishing	Bathrooms
Rodeos	Wineries
Horseback Riding	Mountain Biking
Hunting	Cemeteries & Gravesites
Hiking & Birding	Visitor Information Center
X-Country Skiing	Museum
Downhill Skiing	Antique Stores
Snowmobiling	Art Galleries
Golf Courses	Airport
Camping	Border Crossing
Natural landmark	Murals

*\*Brown numbers indicate historical/cultural location*

## Highland Historic Loop Drive

Okanogan County in North Central Washington State offers everything from snow-capped mountains to high deserts, verdant agricultural areas to wide-open range. You'll find friendly towns and quiet corners to explore here, the largest county in Washington State. With 1,000 miles of scenic trails, 200 water and wildlife access areas, three million acres of public land, and over 300 days of sunshine, you can experience almost any outdoor adventure imaginable.

\* Project is funded totally or in part, as applicable, by the Okanogan County Hotel/Motel Lodging Tax Fund

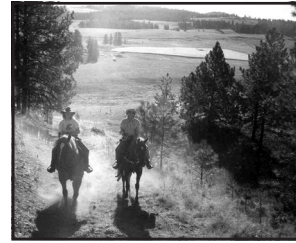
**OkanoganCountry.com • 1 (888) 431-3080**







Early Customs Building in Chesaw, WA



Eden Valley Guest Ranch



Highland Farming



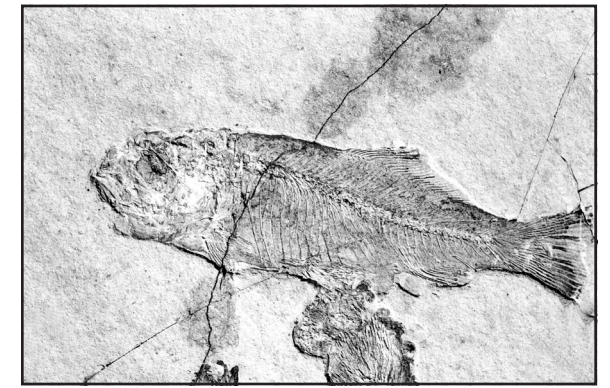
Ronald MacDonald Gravesite



Old Molson Schoolhouse Museum



K Diamond K Guest Ranch



Fossil at Stonerose Interpretive Fossil Center

# Highland Historic Loop Drive

## 1

### Oroville Area Historic Sites

Full Services, Gas, Shopping, Dining, & Lodging

- Visitor Information Center (VIC) 476-2739
- Railroad Depot Museum & Log House
- 1.1 Story of First Orchard Sold to Smith by Chief Tonasket
- Osoyoos Museum Society, 19 Park Place (250) 495-2582
- Nk'MIP Desert Cultural Centre, 1000 Rancher Creek Rd. Osoyoos, BC (888) 495-7901

## 1

### Oroville Attractions & Lodging

Full Services, Gas, Shopping, Dining, & Lodging

- May Festival – 2nd Weekend, May
- Rendevoux Blues Festival, Labor Day Weekend
- Alpine Brewing Company, Tours 476-9662
- Copper Mountain Winery, 33345 Hwy 97 476-2762
- Lake Crest Winery, 718 Apple Way 476-2259
- Okanogan Estate & Vineyards, Tours 476-2736
- Antiques Galore Collectibles & More 476-2970
- Camaray Motel, 1320 Main 476-3684
- 1A Oroville Golf Course 476-2390
- 1B Oroville Municipal Airport 476-9976
- 1C Osoyoos State Park (888-CAMPOUT)

## 2

### Molson Area Historic Sites

- Molson School Museum
- 2.1 Circle City Site
- 2.2 Historic Site of Sidley
- 2.3 Sidley Lake
- 2.4 Old Molson Museum & Ghost Town
- 2.5 Molson Cemetery
- 2.6 Historic Kipling Town Site

## 2

### Molson Attractions & Lodging

- Molson Summerfest (3rd Sat. in June)
- 2A Eden Valley Guest Ranch & Trail Rides 485-4002

## 3

### Chesaw Area Historic Sites

- 3.1 Hee Hee Stone Indian Legend
- 3.2 Bolster Ghost Town
- 3.3 Chesaw Cemetery

## 3

### Chesaw Attractions & Lodging

- 4th of July Chesaw Rodeo
- 3A Lost Lake (Fishing, Camping, Nature Trails)
- 3A Lost Lake Fish Hatchery
- 3A Lost Lake CCC Camp
- 3A Lost Lake Lutheran Ortoa Camp

## 4

### Havillah Area Historic Sites

- Havillah Church built in 1917
- 4.1 Havillah Cemetery (early 1900's)

## 4

### Havillah Attractions & Lodging

- 4A Sitzmark Ski Area 485-3323 or 486-2700
- 4B Highland's Sno Park (Separate Trails for Skiers & Snowmobiles, Forest Service 486-2186)
- 4C Highland Stage Company 486-4699

## B

### Bonaparte Mt. & Beaver Canyon

Attractions & Lodging

- B.1 Beth Lake (Fishing, Camping, Nature Trails)
- B.2 Beaver Lake (Fishing, Camping, Nature Trails)
- B.3 Bonaparte Lake (Fishing, Camping, Trails)
- B.4 Bonaparte Resort

## 5

### Toroda Creek Area Historic Sites

- Toroda Historic Town Site (1898)
- 5.1 Wauconda Community Hall (1917)
- 5.2 Bonnie Brae" Laurie Homestead (circa 1915)
- 5.3 First Toroda Meadow School
- 5.4 Old Toroda Townsite (1897)
- 5.5 Historic Bodie Town Site 1896
- 5.6 Historic Johnson Sawmill Site (@Beaver Canyon Jt.)
- 5.7 Oscar Wheaton Homestead Site
- 5.8 Historic Browns Sawmill Site (built 1937)
- 5.9 Corkscrew Mt. - Site of Geological Interest & Indian Legend
- 5.10 Eagle Cliff Cemetery
- 5.11 Smallest state park in WA. State

## 6

### Curlew Area Historic Sites

Full Services, Gas, Shopping, Dining, & Lodging

- Long Alec Burial Site
- Curlew Cemetery
- Catholic Indian Mission
- Curlew School
- Ansortge Hotel Museum 779-4961
- 6.1 Chief Tonasket Store & Grave Site

## 6

### Curlew Attractions & Lodging

Full Services, Gas, Shopping, Dining, & Lodging

- Curlew Hotel 779-4260
- Barrel Derby Days, 1st Weekend in July
- 6A Wolfgang's Riverview Inn 779-4252
- 6B Curlew Motel 779-4260

## 7

### Malo Area Historic Sites

- 7.1 Antique Husky Auto & Truck Museum 779-4961
- 7.2 Somday Allotment (Indian) Victorian House & Stage Stop
- 7.4 Historic Kermit's School
- 7.5 Malo Historic Grange Hall
- 7.6 Malo Store still operating (built 1903 era) 779-4979
- 7.7 Rumsey Homestead Owner

## 7

### Malo Attractions & Lodging

- 7.3 Empire Creek Llama B&B 779-4139

## 8

### Republic Area Historic Sites

Full Services, Gas, Shopping, Dining, & Lodging

- 8.1 Karamin School
- 8.2 Republic Visitors Center, 775-3387, 775-2295
- Stonerose Interpretive Fossil Center, 775-2295
- Ferry County Historical Center, 775-229
- Eureka Arts Gold Mountain Gallery 775-8010
- 8.3 Murals & Historic Walking Tour (guides at Stonerose)
- 8.4 Republic San Poil Grange (1900±)
- 8.5 Republic Cemetery (late 1800's)
- 8.6 Eureka "Gold" Gulch formerly along Granite Creek
- 8.7 Knob Hill Mine

## 8

### Republic Attractions & Lodging

- Full Services, Gas, Shopping, Dining, & Lodging
- WA State Fiddle Contest (2nd weekend August) 775-3819
- Prospector Days (2nd weekend June) 775-2704
- Mountain Music Festival (1st weekend August) 775-3536
- Wings Over Republic Fly In (4th weekend August) 775-3911
- Stock Car Races (alternating summer weekends) 775-3508
- Klondike Motel 775-3555, 800-213-2812 (reservations only)
- Northern Inn 775-3371
- Prospector Inn 775-3361
- Ferry County Fair (Labor Day weekend) 775-3146
- 8A Tiffany's Resort 775-3152
- 8B Fisherman's Cove Resort 775-3641
- 8C Curlew Lake State Park 775-3592
- 8D Ferry County Airport 775-2101
- 8E Black Beach Resort 775-3989
- 8F K<K Guest Ranch 775-3536

This map produced by the Okanogan County Tourism Council. Map information and coordination by Robin Stice, Eden Valley Guest Ranch. Design & layout by Earth & Sky Studios, LLC.

For more Okanogan County info, visit [economic-alliance.com](http://economic-alliance.com)

\*All phone numbers in (509) area code unless noted.

## 9

### Wauconda Area Historic Sites

- General Store & Restaurant (1928)
- 9.1 Old Wauconda Town Site (Summit Highway 20)
- 9.2 Sweat Creek Camp Ground & Historic Site
- 9.3 Pflug Mansion (1908)
- 9.4 Wauconda Pioneer Cemetery

## 9

### Wauconda Attractions & Lodging

- Historic Flag Day Celebration (Sunday Closest to Flag Day, Since 1914)
- Wauconda Community Hall Free Stuff Day

## 10

### Tonasket Area Historical Sites

Full Services, Gas, Shopping, Dining, & Lodging

- Tonasket Visitors Center (VIC) 486- 4543
- Indian Interpretive Center @ the VIC
- 10.1 Aeneas Valley Historic Site
- 10.2 McLaughlin Canyon Battle Site
- 10.3 Historic Stage Stop Site
- 10.3 Anglin - Old Town Site & Cemetery
- 10.4 Sunny Slope School

## 10

### Tonasket Attractions & Lodging

Full Services, Gas, Shopping, Dining, & Lodging

- Visitor's Center & Indian Interpretive Display
- Antique Stores
- Founder's Day & PRCA Rodeo (first weekend after Memorial Day)
- Farmers Market (May through October Thursdays 3 to 6 p.m.)
- Father's Day Fly in - Father's Day
- Truck and Tractor Pull - 3rd weekend of July
- Garlic Festival (4th Weekend Aug., 411 Western Ave)
- Demolition Derby (Sunday of Labor day weekend)
- Okanogan Family Faire - Early October
- Winterfest (1st Friday December)
- Red Apple Inn 486-2119
- The Junction Motel 486-4500
- Junior Rodeo - Middle of April
- 10A Caanan Guest Ranch 486-1191

## 11

### Ellisforde Area Historical Sites

- Old Okanogan Mission Monument & Cemetery

Special Feature	Distances in Miles	
Boulder Creek Indian Trail used by Hudsons Bay Co. & General Sherman from Oroville to Curlew.	Oroville to Molson	15
	Molson to Chesaw	17
	Chesaw to Toroda	25
	Toroda to Curlew	12
	Curlew to Malo	7
	Malo to Republic	22
	Republic to Wauconda	17
	Wauconda to Tonasket	24
	Tonasket to Oroville	14
Border Crossings		
Oroville/Osoyoos: 24 Hours		
Midway/Port of Ferry: 9:00 a.m. - 5:00 p.m.		
Danville: 8:00 a.m. – 12:00 p.m. Midnight		